

1
Component
Tester

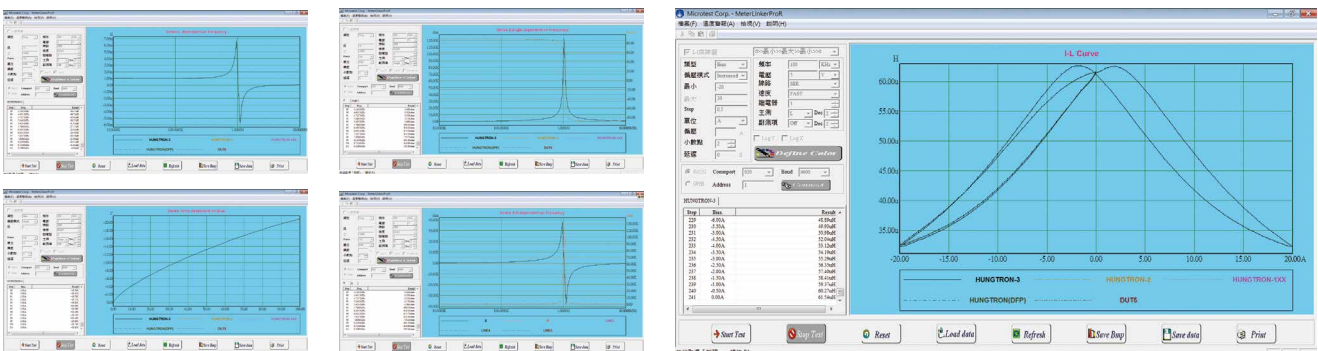
DC Bias Current Source

6210 / 6220 + LCR Meter 6375 / 6376 / 6377 / 6378 / 6379



Key Feature

- Current and frequency graphic scanning analysis
- Temperature-rising scan function-solve the problems of overheating a DUT to burn
- DCR Measurement function
- Long-term consecutive maximum power output
- Interchangeable bi-direction current function
- Scalable current output up to 60A / 120A (6210 / 6220)
- Innovative strengthen protection device
- Auto-adjust maximum voltage output according to current output
- Direct Handler interfaces control through LCR power meter
- 6210/6220 can be overlapping 6 sets



Specification

DC Bias Model	6210	6220
Output Current	0.000A-10.000A	0.000A-20.000A
Accuracy	0.000A-1.000A 1%+5mA	
	1.001A-5.000A 2%	
	5.001A-20.000A 3%	
Frequency	20Hz-3MHz	
Power Consumption	320W max.	

LCR Meter with DC Bias

LCR Meter Model	6375	6376	6377	6378	6379
Meter Mode	●	●	●	●	●
LCR Frequency (Hz)	200k	500k	1M	5M	10M
DC Bias Model	6210 / 6220				
DC Bias Freq. (Hz)	200k	500k	1M	3M	3M
Output Current (Max.)	60AMP / 120AMP				
Constant Power Output	●	●	●	●	●
Current Switch	●	●	●	●	●
DC Resistance	●	●	●	●	●
Graphic Mode	-	-	●	●	●
Temperature Analysis	●	●	●	●	●

General

Power Supply	Voltage	88-264Vac
	Frequency	47-63Hz
Interface	RS-232, Handler, GPIB	
Operation	Auto, Manual, RS-232, GPIB (option)	
Environment	Temperature: 10 ~ 40°C, Humidity: 20 ~ 90%RH	
Dimension W*H*D	337x145x522 mm	
Weight	15 Kg	